

Sample Name:

```

=====
Acq. Operator   :                               Seq. Line :    4
Acq. Instrument : Instrument 1                   Location  : Vial 9
Injection Date  : 8/1/2022 2:06:19 PM          Inj       :    1
                                                Inj Volume: 3.0 µl

```

```

Acq. Method     : D:
Last changed    : 6/24/2021 11:39:21 AM
Analysis Method : D:\CHEM32\1\1.M
Last changed    : 8/1/2022 4:25:33 PM
                (modified after loading)

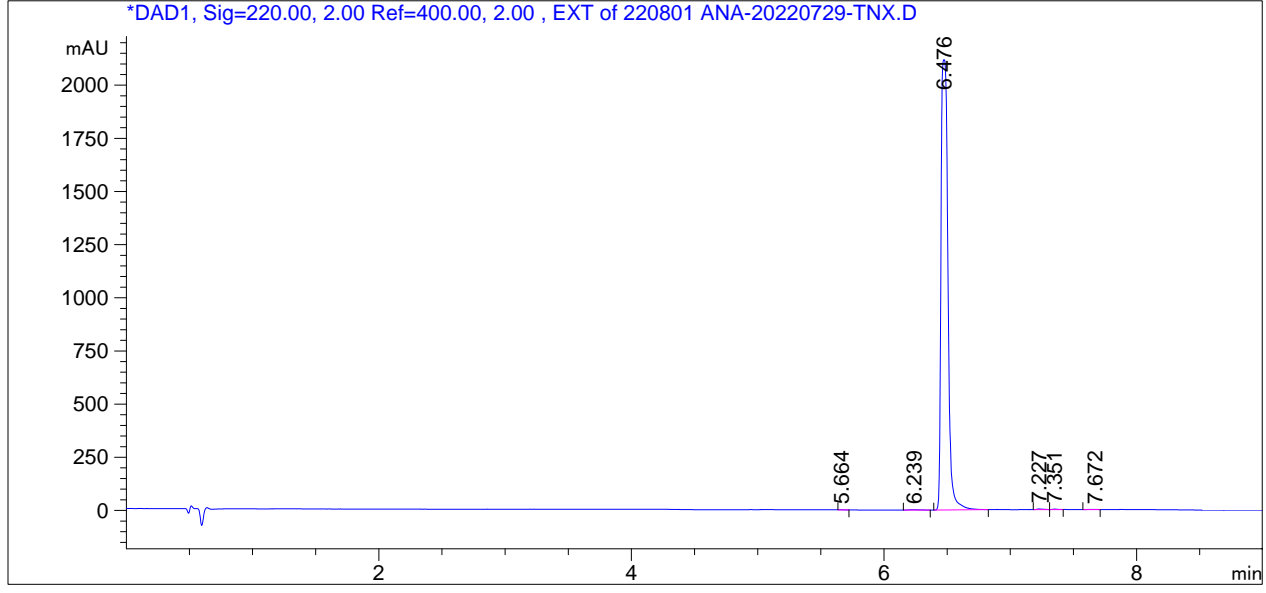
```

```

Sample Info     : [A = ACN, B = acid-1/H2O] 0% A/B 1.5 min, 0-95% A/B 4.5 min, 95% A/B 3 min;
                Athena C18 (3 µm, 2.1 mm * 100 mm); Flow: 0.46 ml/min, T = 25

```

Additional Info : Peak(s) manually integrated



Area Percent Report

```

Sorted By       : Signal
Multiplier      : 1.0000
Dilution        : 1.0000
Use Multiplier & Dilution Factor with ISTDs

```

```

Signal 1: DAD1, Sig=220.00, 2.00 Ref=400.00, 2.00 , EXT
Signal has been modified after loading from rawdata file!

```

Peak #	RetTime [min]	Type	Width [min]	Area [mAU*s]	Height [mAU]	Area %
1	5.664	VB	0.0334	2.84255	1.12641	0.0353
2	6.239	BV	0.0760	11.28480	1.78022	0.1401
3	6.476	BB	0.0602	8018.20752	2117.97681	99.5135
4	7.227	BV	0.0486	11.80776	3.16106	0.1465
5	7.351	VV	0.0510	8.01659	2.25226	0.0995
6	7.672	BV	0.0616	5.25146	1.07263	0.0652

```

Totals :                               8057.41069 2127.36940

```

\*\*\* End of Report \*\*\*