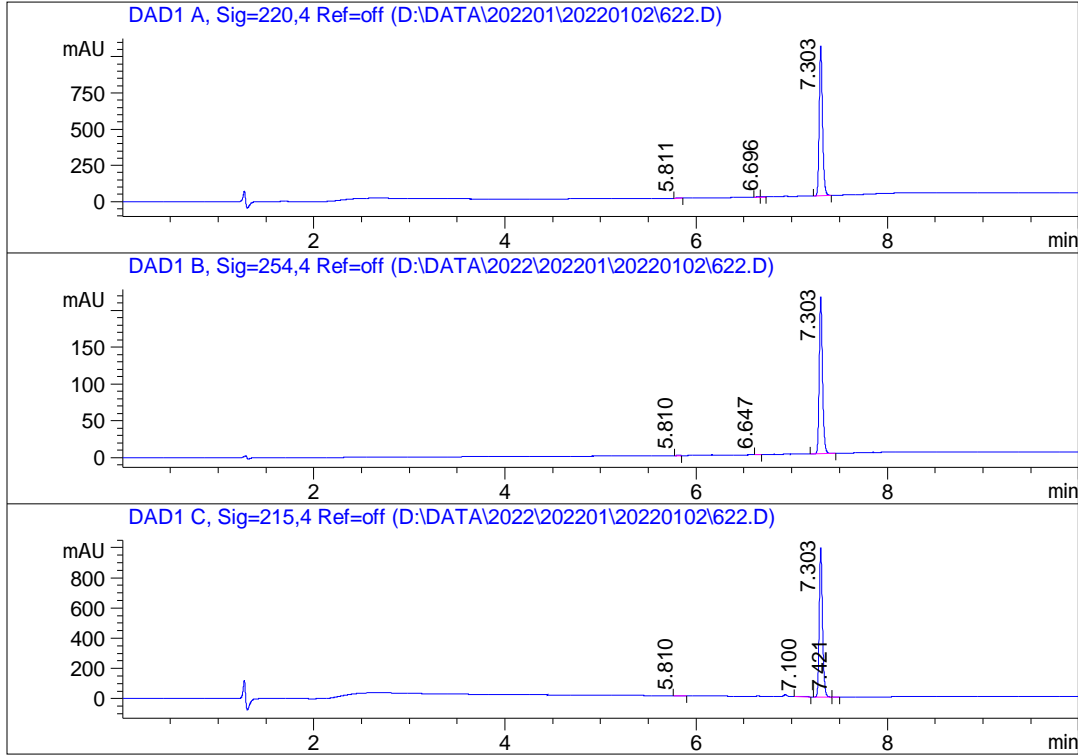


HPLC REPORT

Sample ID: 622  
 Compound ID: SR9011  
 Data File: D:\DATA\2022\202201\20220102\622.D  
 Acq. Method: D:\DATA\2022\202201\20220102\10-80AB\_10MIN\_M3.M  
 Column : Eclipse Plus C18,100mm\*4.6mm\*3.5um  
 Inj. time: 02/01/2022 6:38:03 PM  
 Inj. Volumn: 1.00  
 Inj.Location:P2-C-08  
 Instrument : HPLC G



Signal: DAD1 A, Sig=220,4 Ref=off

#	Meas. Ret. Tim	Height	Area	Area %
1	5.811	1.515	3.216	0.131
2	6.640	2.484	5.224	0.213
3	6.696	1.260	3.115	0.127
4	7.303	1022.558	2438.031	99.528

Signal: DAD1 B, Sig=254,4 Ref=off

#	Meas. Ret. Tim	Height	Area	Area %
1	5.810	0.371	0.891	0.177
2	6.647	0.518	1.080	0.215
3	7.303	210.795	501.088	99.608

Signal: DAD1 C, Sig=215,4 Ref=off

#	Meas. Ret. Tim	Height	Area	Area %
1	5.810	1.566	3.769	0.161
2	7.100	0.789	4.429	0.189
3	7.303	992.663	2334.419	99.568
4	7.421	0.771	1.926	0.082